



BIRGIT

Unire dati con LOD diversi
Febbraio 2024



Cofinanziato
dall'Unione europea

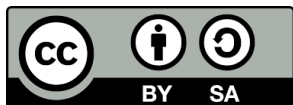
Unire dati con LOD diversi

vlado.cetl@unin.hr

sanja.samanovic@unin.hr

danko.markovinovic@unin.hr

olga.bjelotomic.orsulic@unin.hr

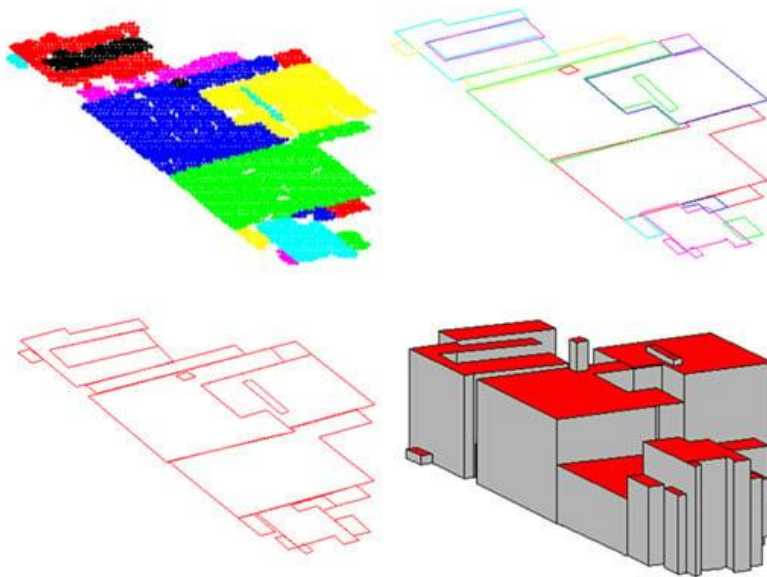


Risultati di apprendimento

- Al termine di questo modulo, il partecipante dovrà essere in grado di
 - Combinare dati geospaziali 3D con diversi tipi di geometria
 - Interpretare diversi livelli di dettaglio (LOD)

L'obiettivo è quello di combinare e visualizzare diverse fonti di dati.

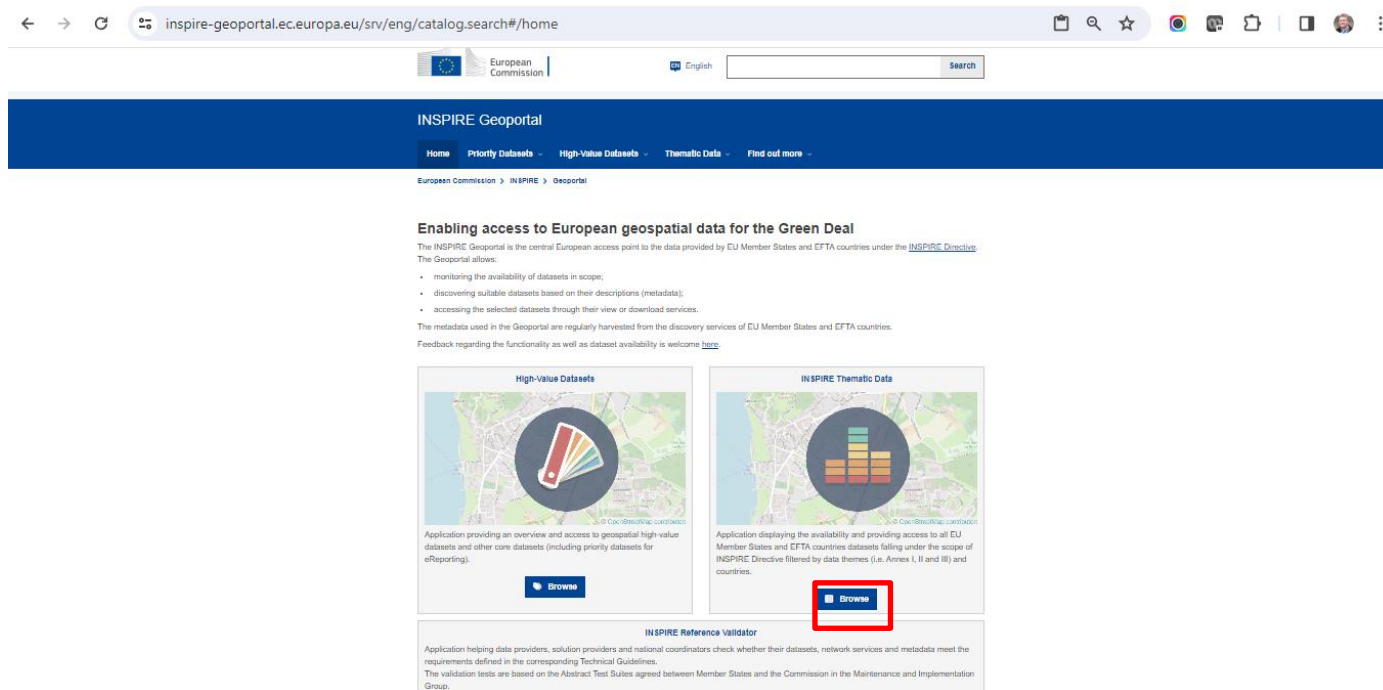
- Geometrie diverse e LOD diversi (es. LOD0 e LOD1).)



- Fonti di dati
 - WMS, WFS, ATOM-Feed, APIs
 - Interoperabilità
 - L'interoperabilità dei dati territoriali è la capacità di sistemi, formati e standard diversi di scambiare e utilizzare efficacemente i dati territoriali.

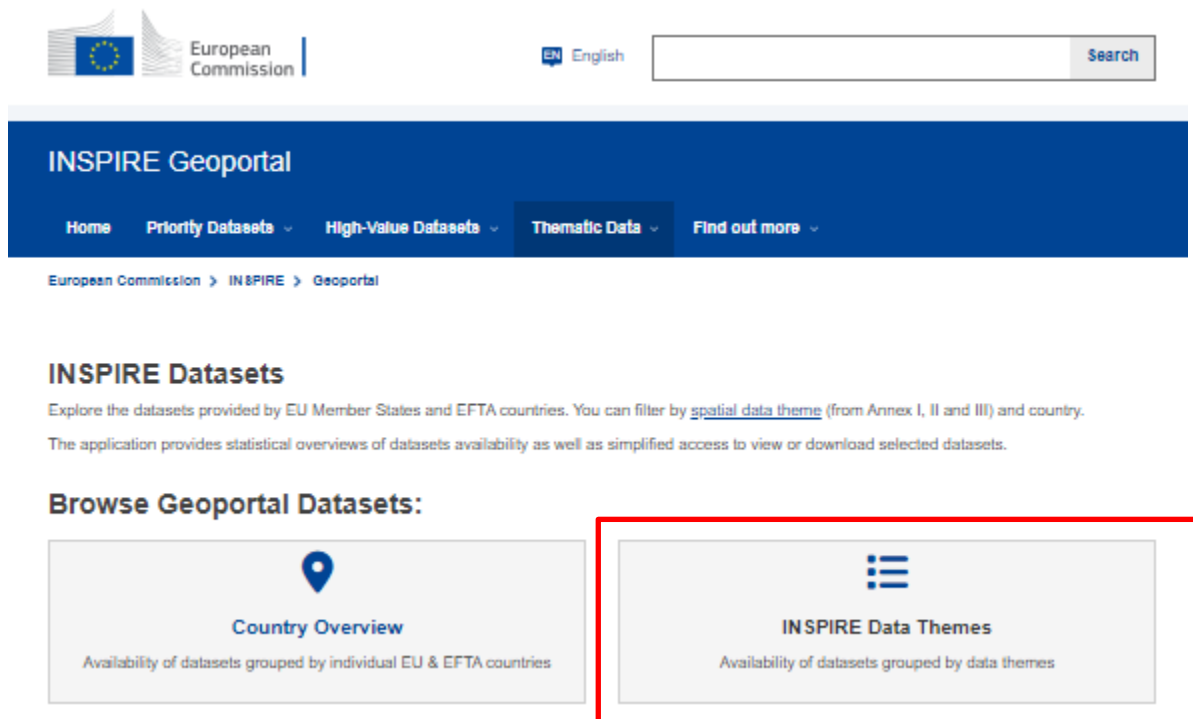


- Fonti di dati (1)



The screenshot shows the INSPIRE Geoportal website. The browser address bar displays `inspire-geoportal.ec.europa.eu/srv/eng/catalog.search#/home`. The website header includes the European Commission logo, a language selector set to "English", and a search bar. Below the header, a blue navigation bar contains links: Home, Priority Datasets, High-Value Datasets, Thematic Data, and Find out more. The main content area is titled "INSPIRE Geoportal" and features a section "Enabling access to European geospatial data for the Green Deal". This section explains that the INSPIRE Geoportal is the central European access point to data provided by EU Member States and EFTA countries under the INSPIRE Directive. It lists three key functions: monitoring dataset availability, discovering suitable datasets, and accessing selected datasets. Below this, there are three main application tiles: "High-Value Datasets" (with a "Browse" button), "INSPIRE Thematic Data" (with a "Browse" button highlighted by a red rectangle), and "INSPIRE Reference Validator". Each tile includes a map background and a descriptive paragraph about its functionality.

- Fonti di dati (1)



The screenshot shows the INSPIRE Geoportal website. At the top, there is a header with the European Commission logo, a language selector set to 'EN English', and a search bar. Below the header is a blue navigation bar with the title 'INSPIRE Geoportal' and several menu items: 'Home', 'Priority Datasets', 'High-Value Datasets', 'Thematic Data', and 'Find out more'. A breadcrumb trail below the navigation bar reads 'European Commission > INSPIRE > Geoportal'. The main content area is titled 'INSPIRE Datasets' and includes a paragraph explaining that users can explore datasets provided by EU Member States and EFTA countries, filtered by spatial data theme and country. It also mentions that the application provides statistical overviews and simplified access to view or download datasets. Under the heading 'Browse Geoportal Datasets:', there are two large buttons. The first button, 'Country Overview', features a location pin icon and the text 'Availability of datasets grouped by individual EU & EFTA countries'. The second button, 'INSPIRE Data Themes', features a list icon and the text 'Availability of datasets grouped by data themes'. This second button is highlighted with a red rectangular border.

European Commission

EN English

Search

INSPIRE Geoportal

Home Priority Datasets High-Value Datasets Thematic Data Find out more


European Commission > INSPIRE > Geoportal

INSPIRE Datasets

Explore the datasets provided by EU Member States and EFTA countries. You can filter by [spatial data theme](#) (from Annex I, II and III) and country.


The application provides statistical overviews of datasets availability as well as simplified access to view or download selected datasets.

Browse Geoportal Datasets:



Country Overview

Availability of datasets grouped by individual EU & EFTA countries



INSPIRE Data Themes



Availability of datasets grouped by data themes

- Fonti di dati (1)

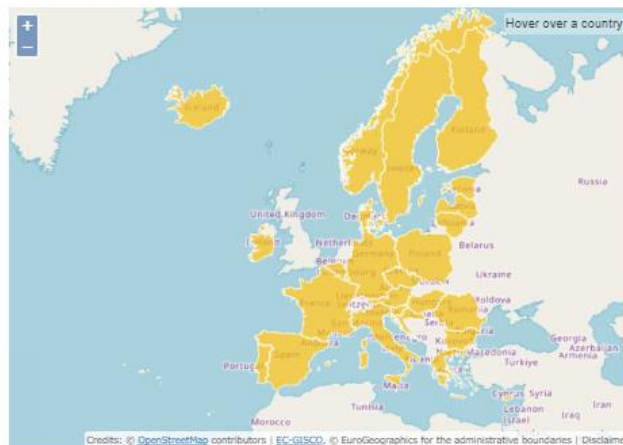
INSPIRE Data Themes

Explore all Member States' datasets by selecting a data theme.

Annex I

 Addresses Def: <i>Location of properties based on address identifiers,...</i> 186 86 83	 Administrative units Def: <i>Units of administration, dividing areas where Member...</i> 613 108 211	 Cadastral parcels Def: <i>Areas defined by cadastral registers or equivalent....</i> 196 52 54	 Geographical grid systems Def: <i>Harmonised multi-resolution grid with a common point...</i> 127 12 11
 Geographical names Def: <i>Names of areas, regions, localities, cities, suburbs,...</i>	 Hydrography Def: <i>Hydrographic elements, including marine areas and all...</i>	 Protected sites Def: <i>Area designated or managed within a framework of international...</i>	 Coordinate reference systems Def: <i>Systems for uniquely referencing spatial information...</i>

- Fonti di dati (1)



Geoportal Dataset Statistics

196
Metadata records

52
Downloadable Datasets

54
Viewable Datasets

Spatial scope coverage:

- ☐ National
☐ Regional

Select a country

Austria	5 4 2	Greece	1 1 1	Norway	3 1 3
Belgium	1 0 1	Hungary	1 1 1	Poland	1 0 1
Bulgaria	1 0 0	Iceland	2 0 0	Portugal	3 1 1
Croatia	1 0 1	Ireland	2 2 2	Romania	2 1 1
Cyprus	1 1 1	Italy	115 2 3	Slovakia	0 0 0
Czech Republic					
Denmark					
Estonia					
Finland					
France					
Germany					

Title	Properties
Katastarske čestice i katastarske općine INSPIRE	

- Fonti di dati (1)

Katastarske čestice i katastarske općine INSPIRE

Metadata

Country:  Croatia

+ Download Options

— View Options

Simple Viewer

Layer name

Service Metadata

Preview Dataset

CP.CadastralParcel

More Details

Preview Dataset

inspire-geoportal.ec.europa.eu says

Copied the url: https://api.uredjenazemlja.hr/services/inspire/cp_wms/ows?REQUEST=GetMap&SERVICE=WMS&VERSION=1.3.0&LAYERS=CP.CadastralZoning&FORMAT=image/png&CRS=EPSG:4326&BBOX=1.5646197848183165,2.302144192592216,2.607699641363861,3.836906987653693&HEIGHT=256&WIDTH=256&STYLES=

More Details

— Dataset Metadata

Resource Title

Katastarske čestice i katastarske općine INSPIRE

This is WMS URL

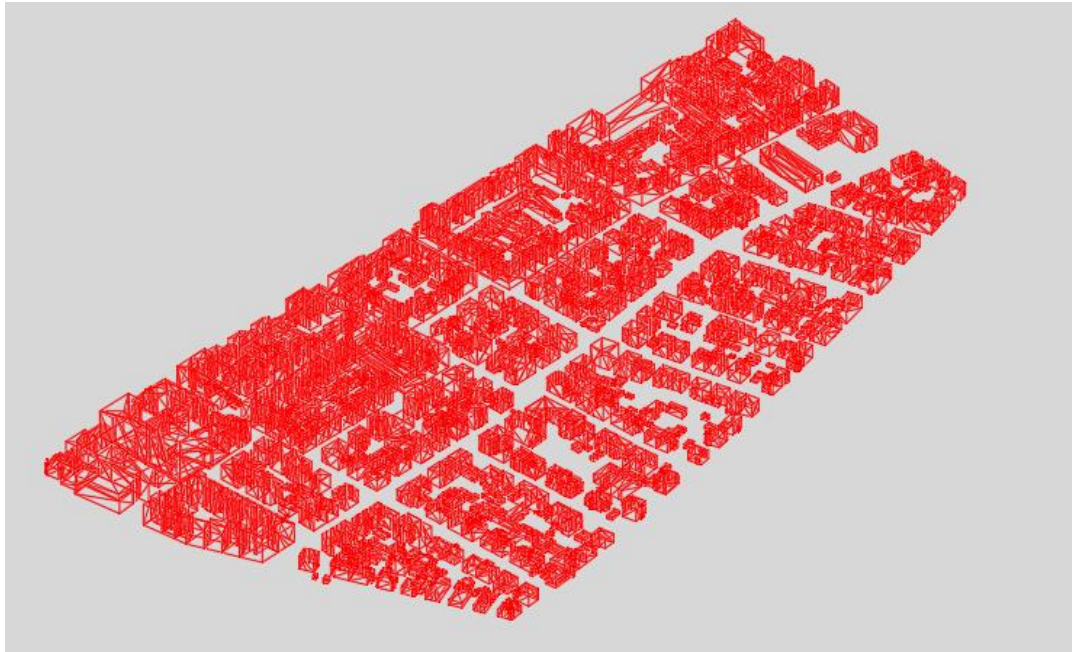
OK

Tags

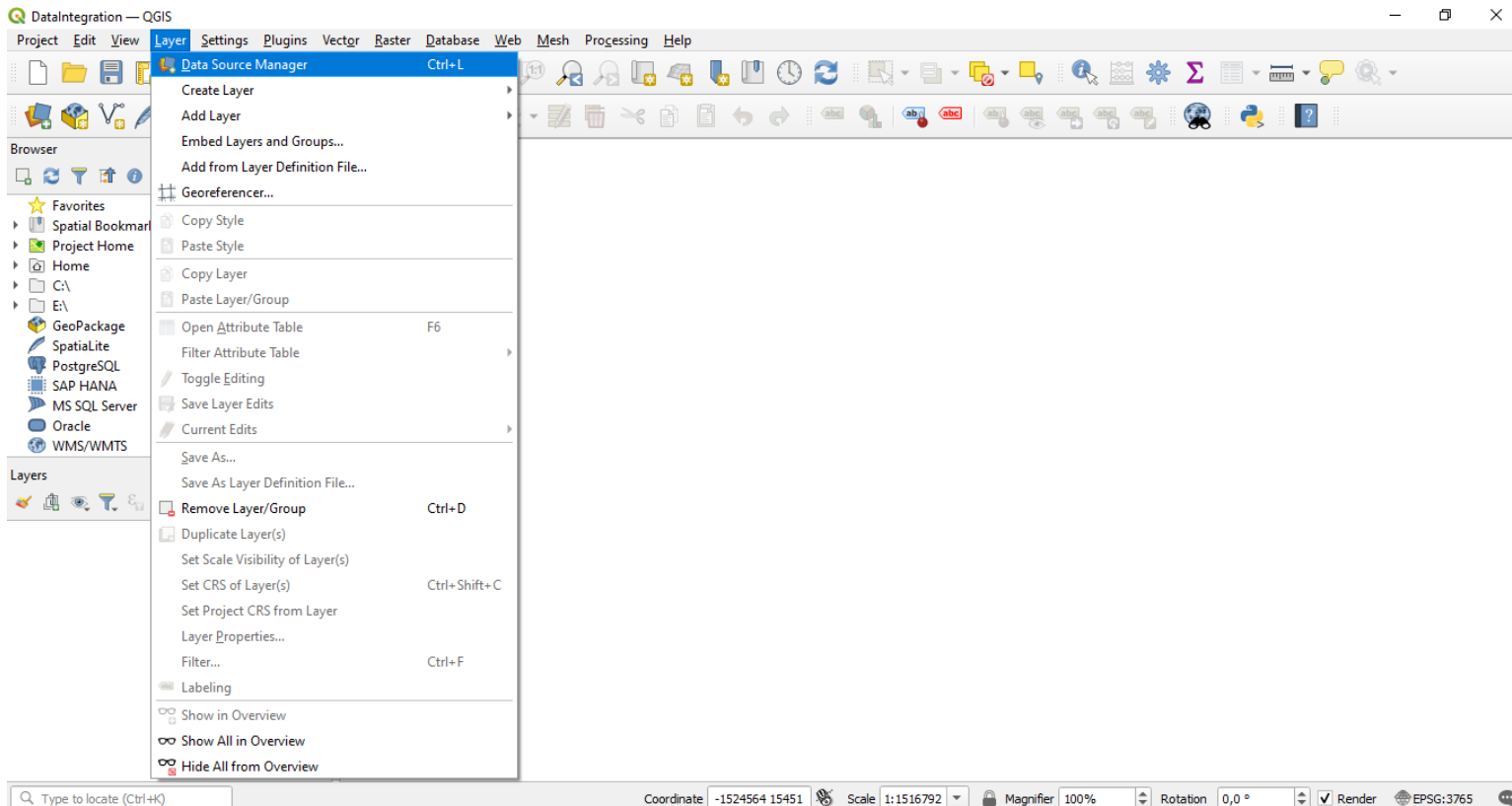
Priority Dataset

Spatial Scope

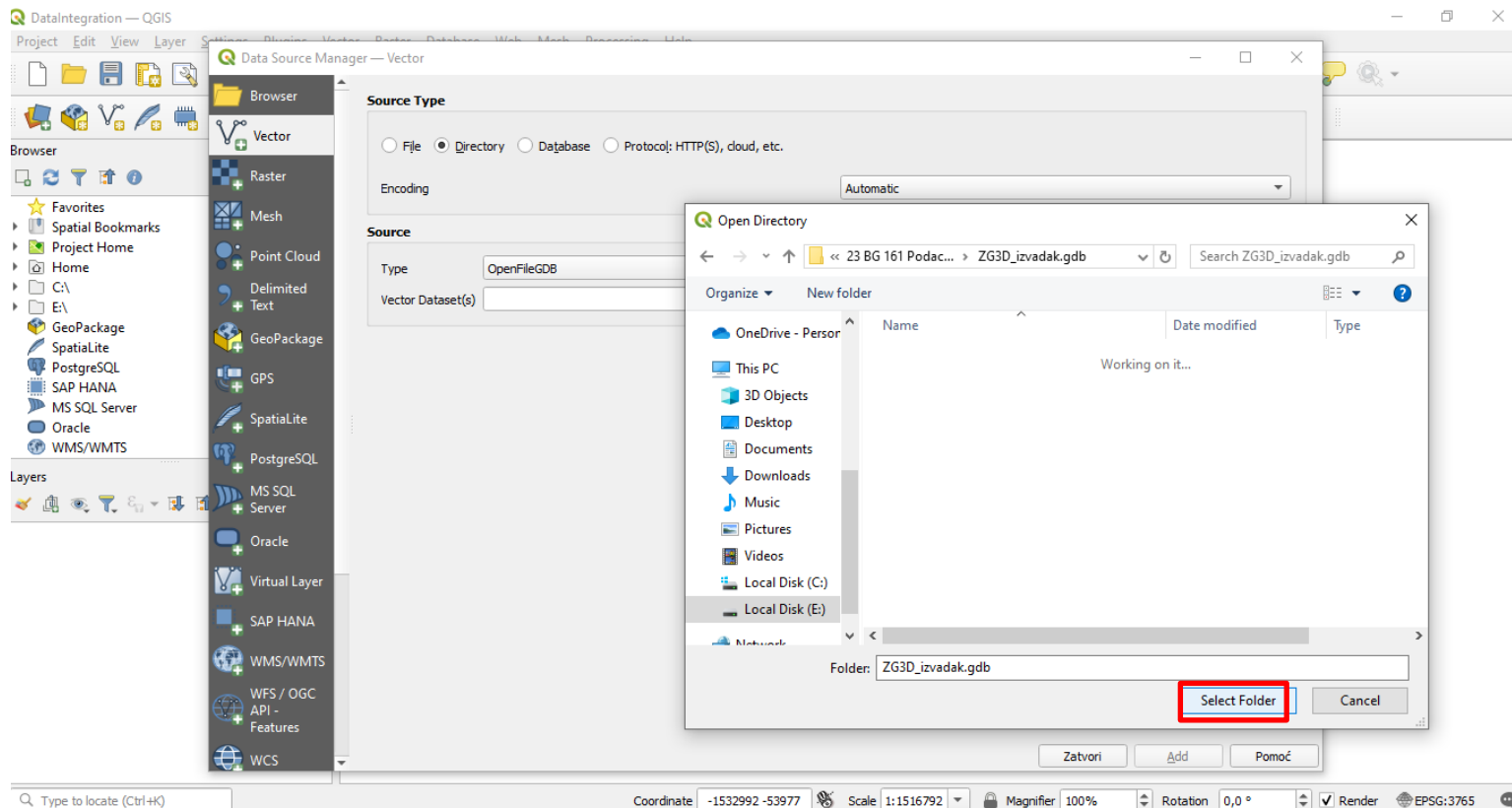
- Fonti di dati (2)
 - Città di Zagabria in 3D (parte della città)



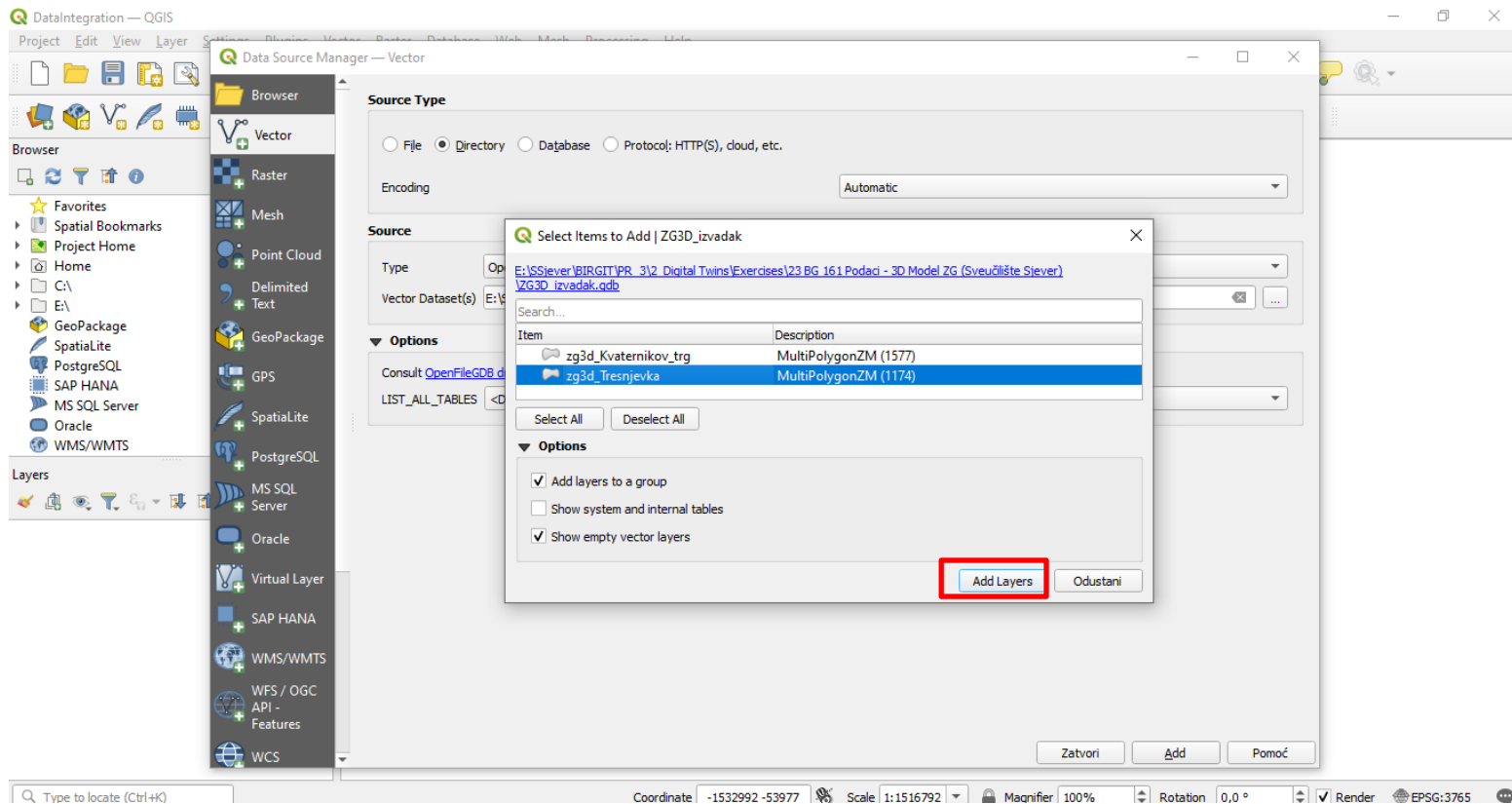
- Integrazione dei dati (QGIS)



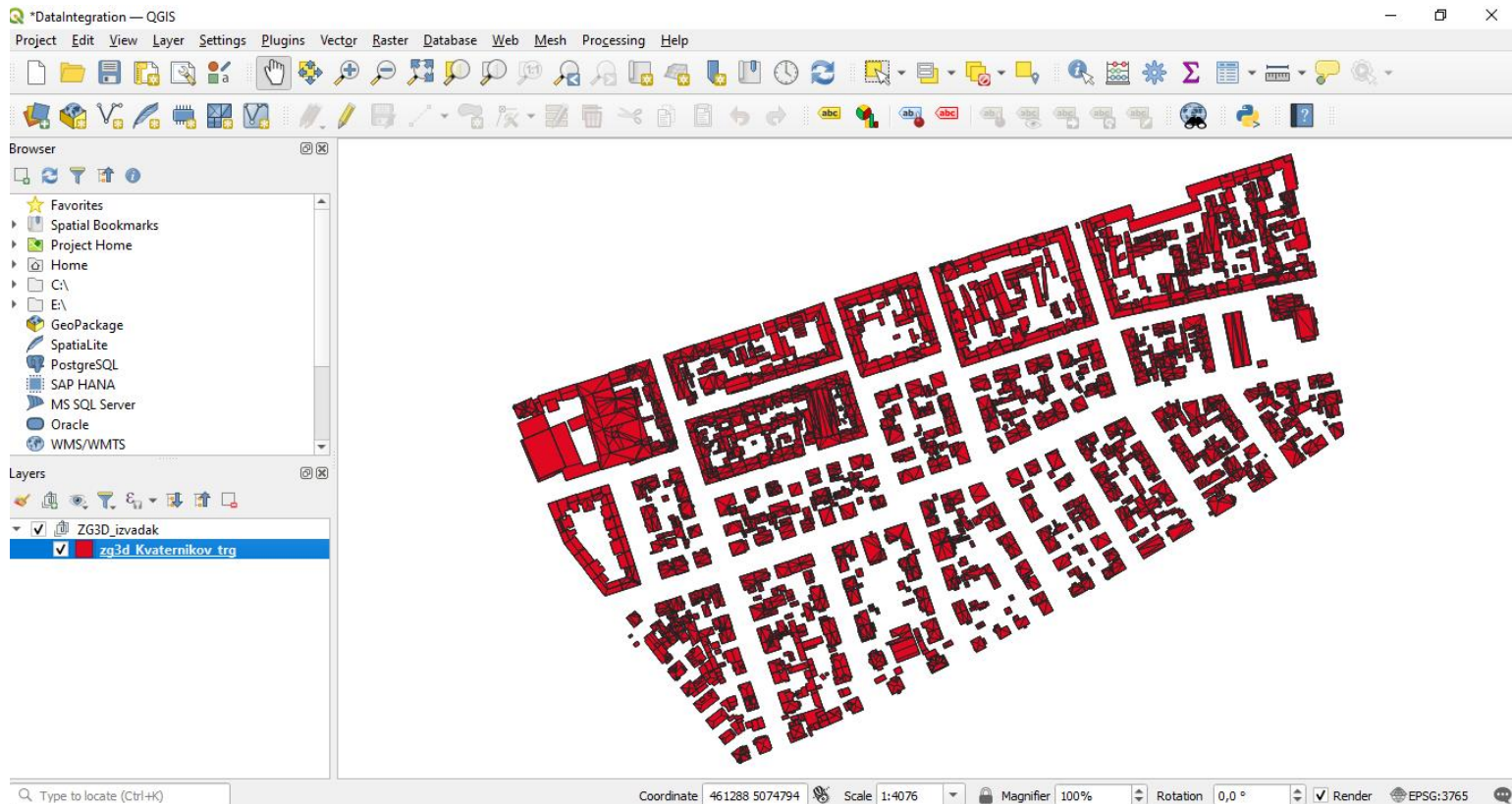
- Integrazione dei dati (QGIS)



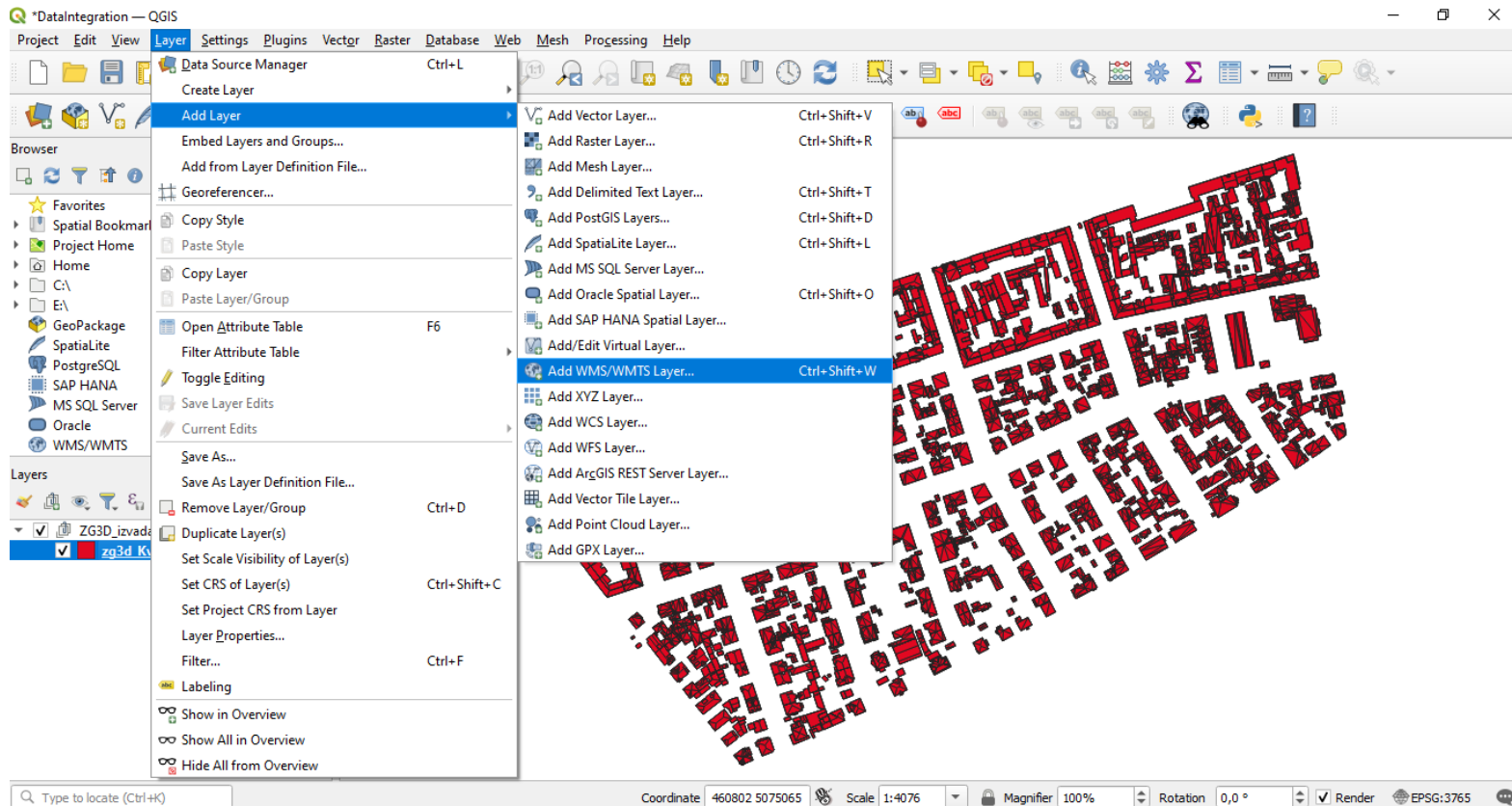
- Integrazione dei dati (QGIS)



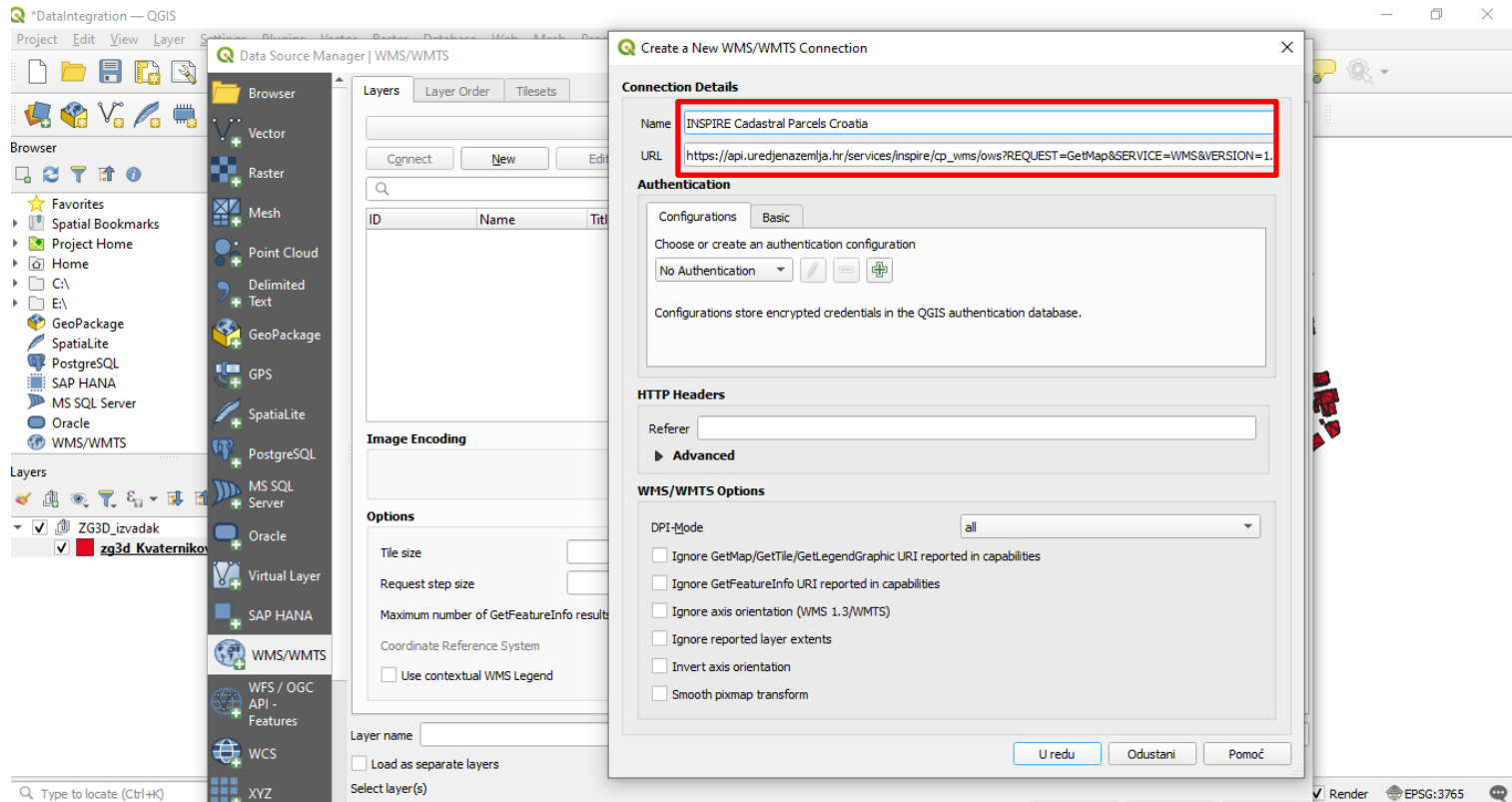
- Integrazione dei dati (QGIS)



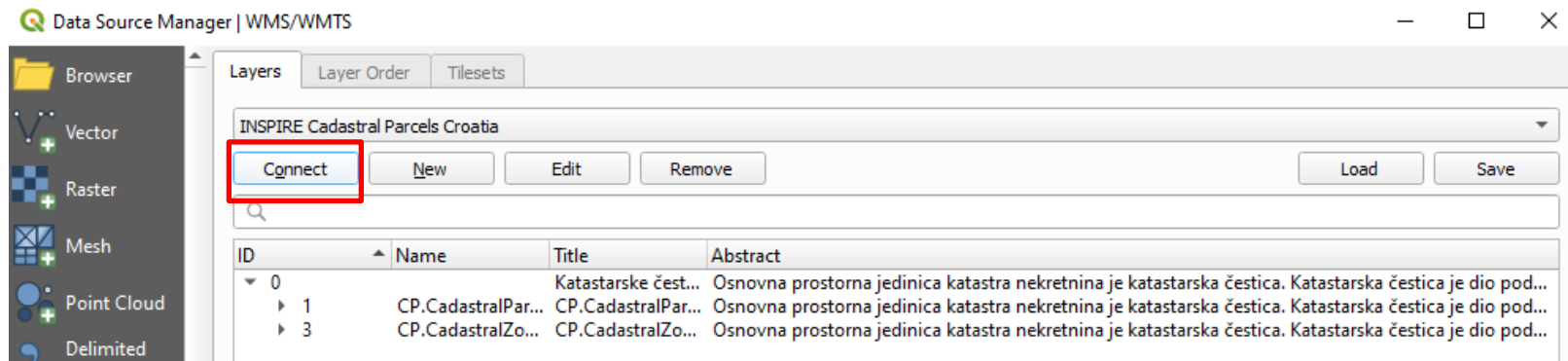
- Integrazione dei dati (QGIS)



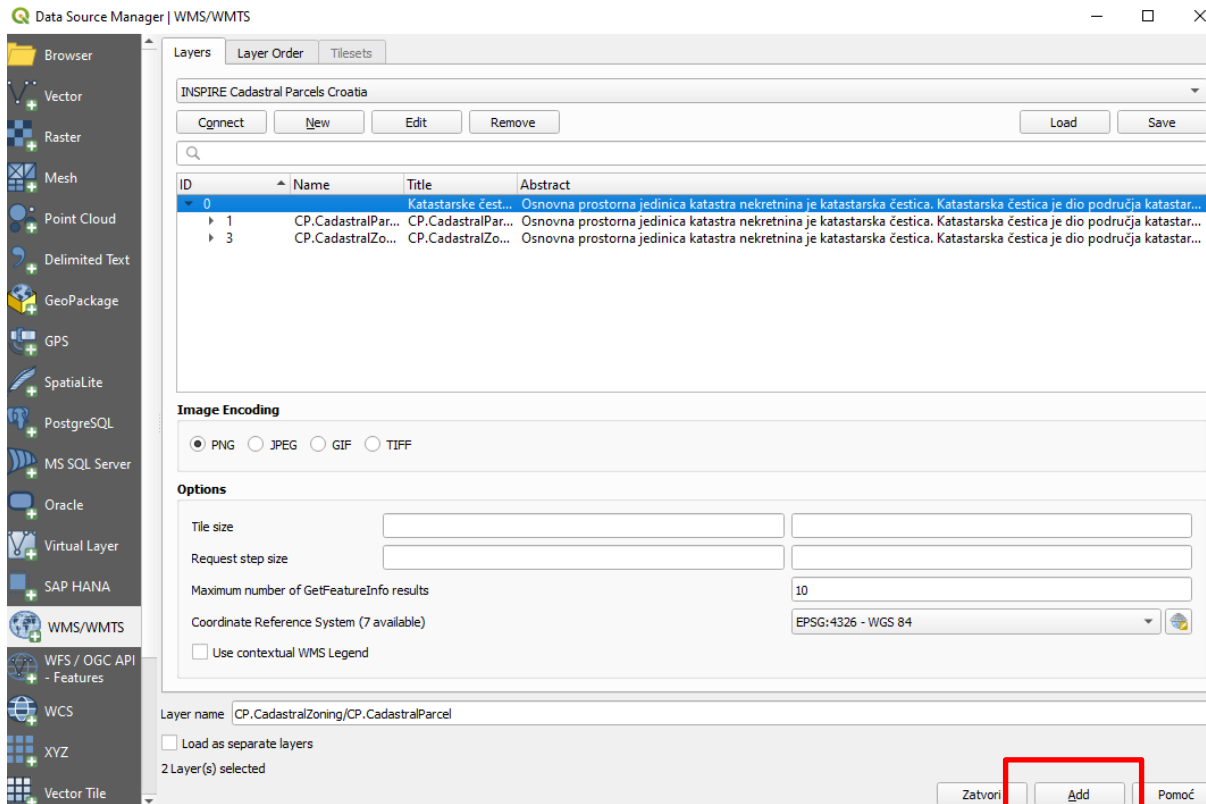
- Integrazione dei dati (QGIS)



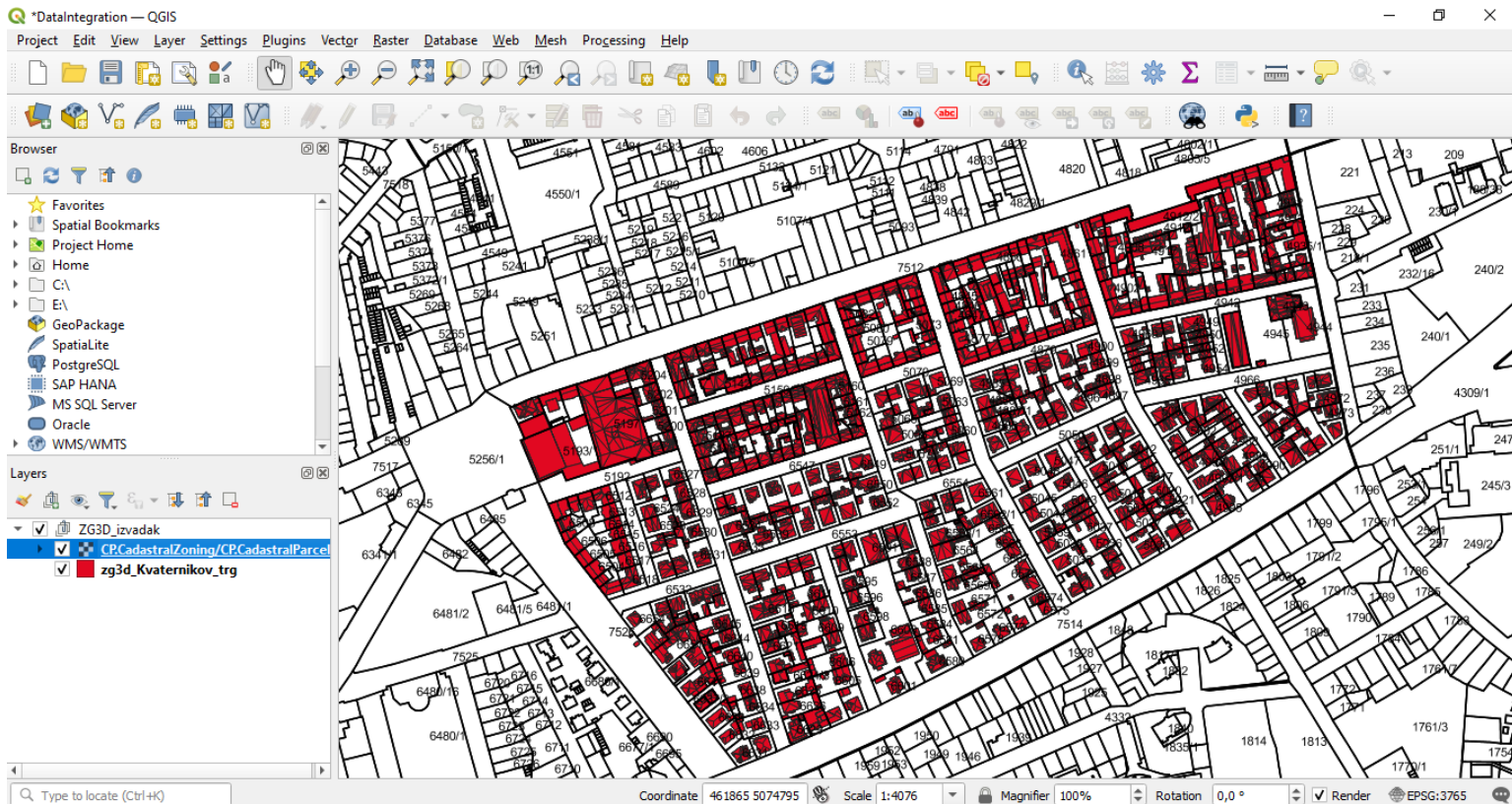
- Integrazione dei dati (QGIS)



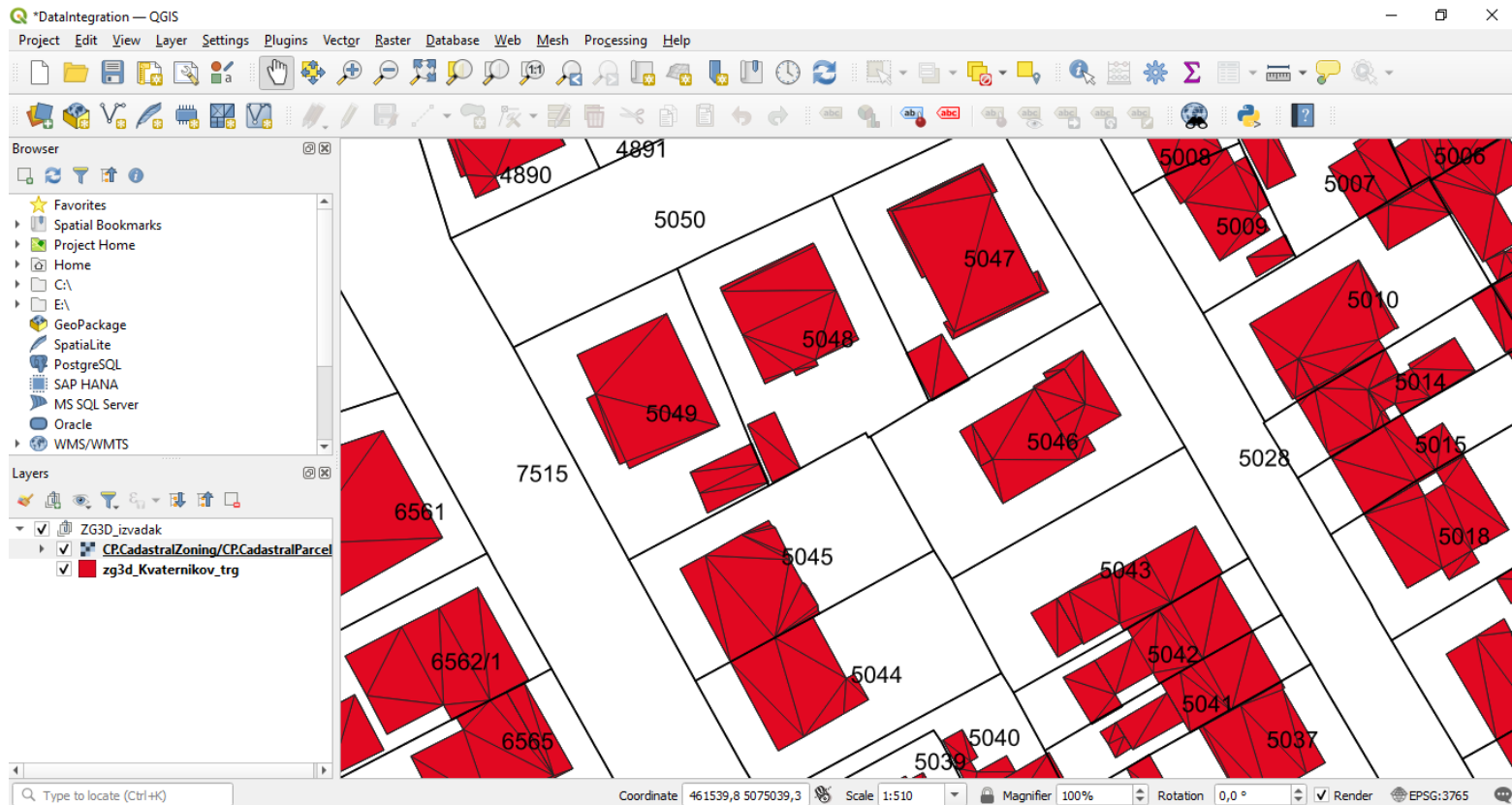
- Integrazione dei dati (QGIS)



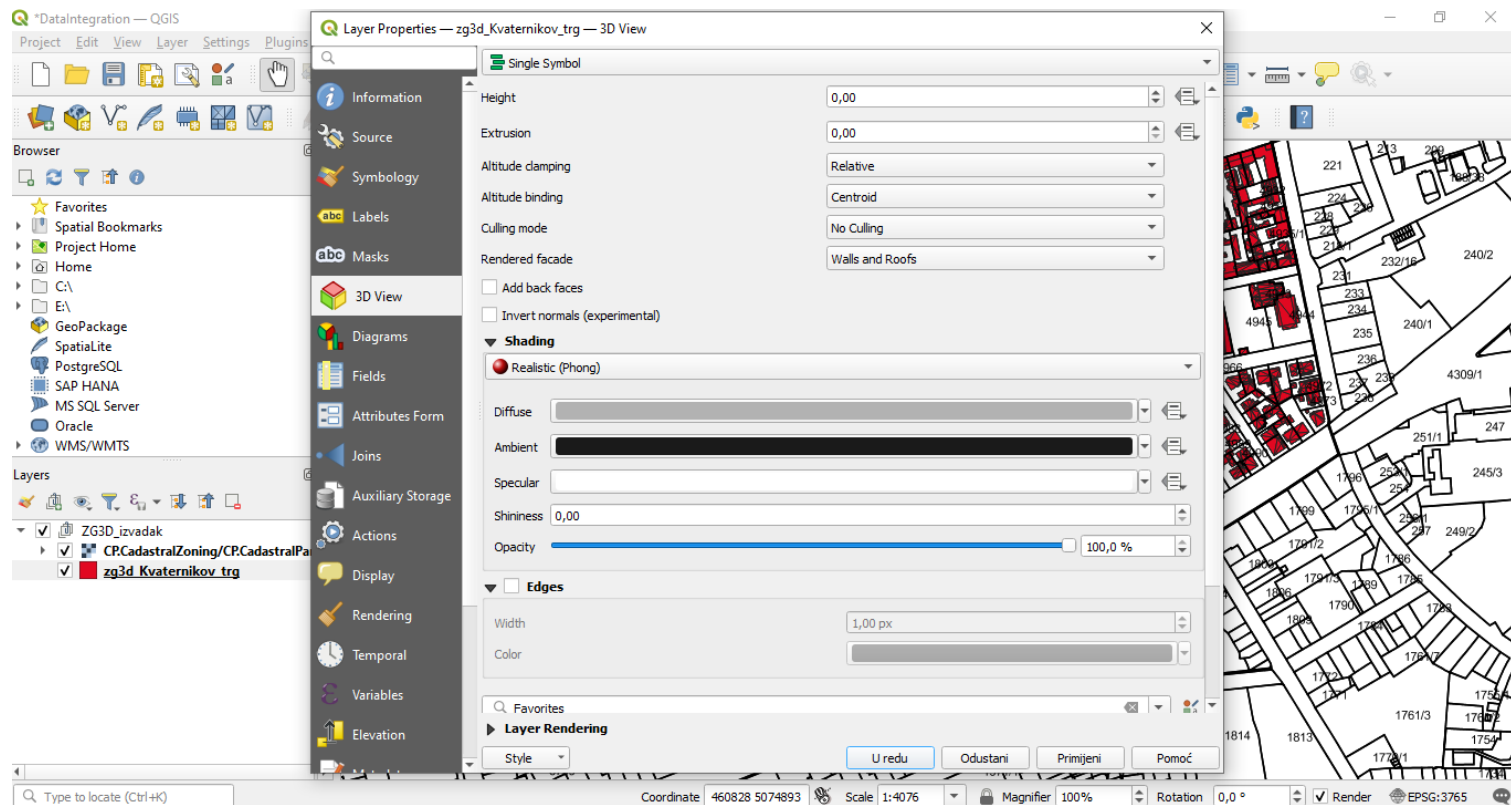
- Integrazione dei dati (QGIS)



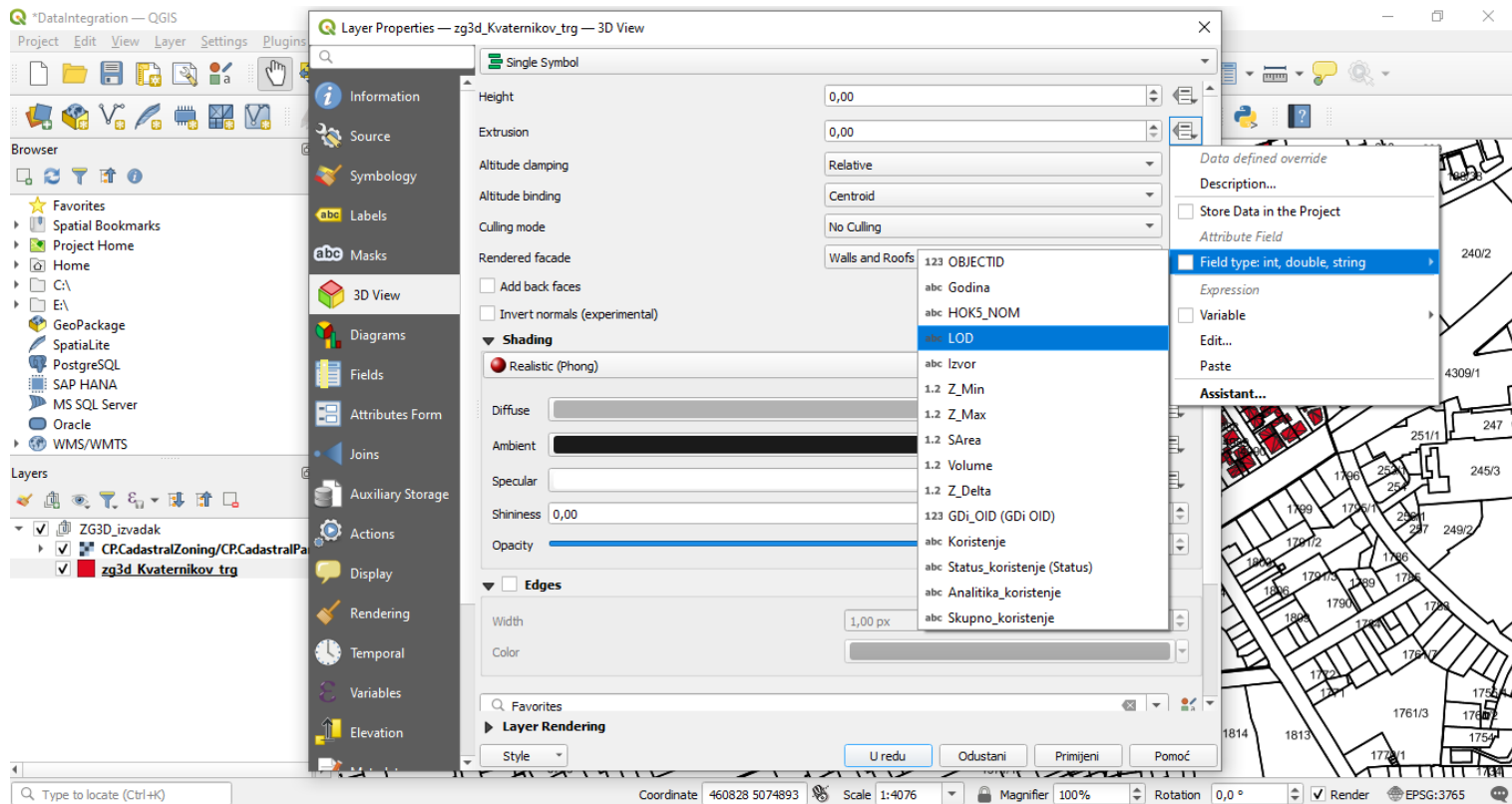
- Integrazione dei dati (QGIS)



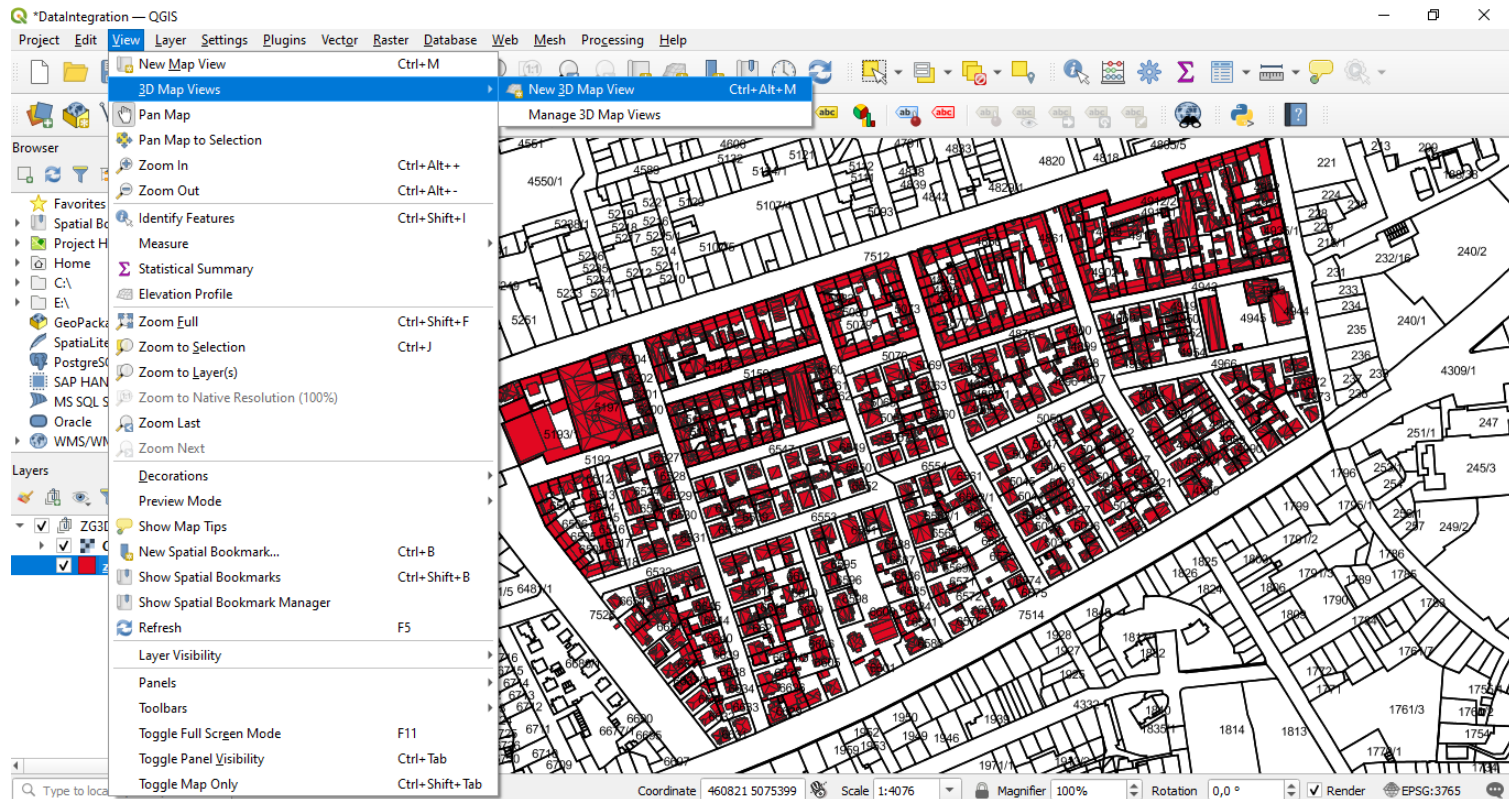
- Integrazione dei dati (QGIS)



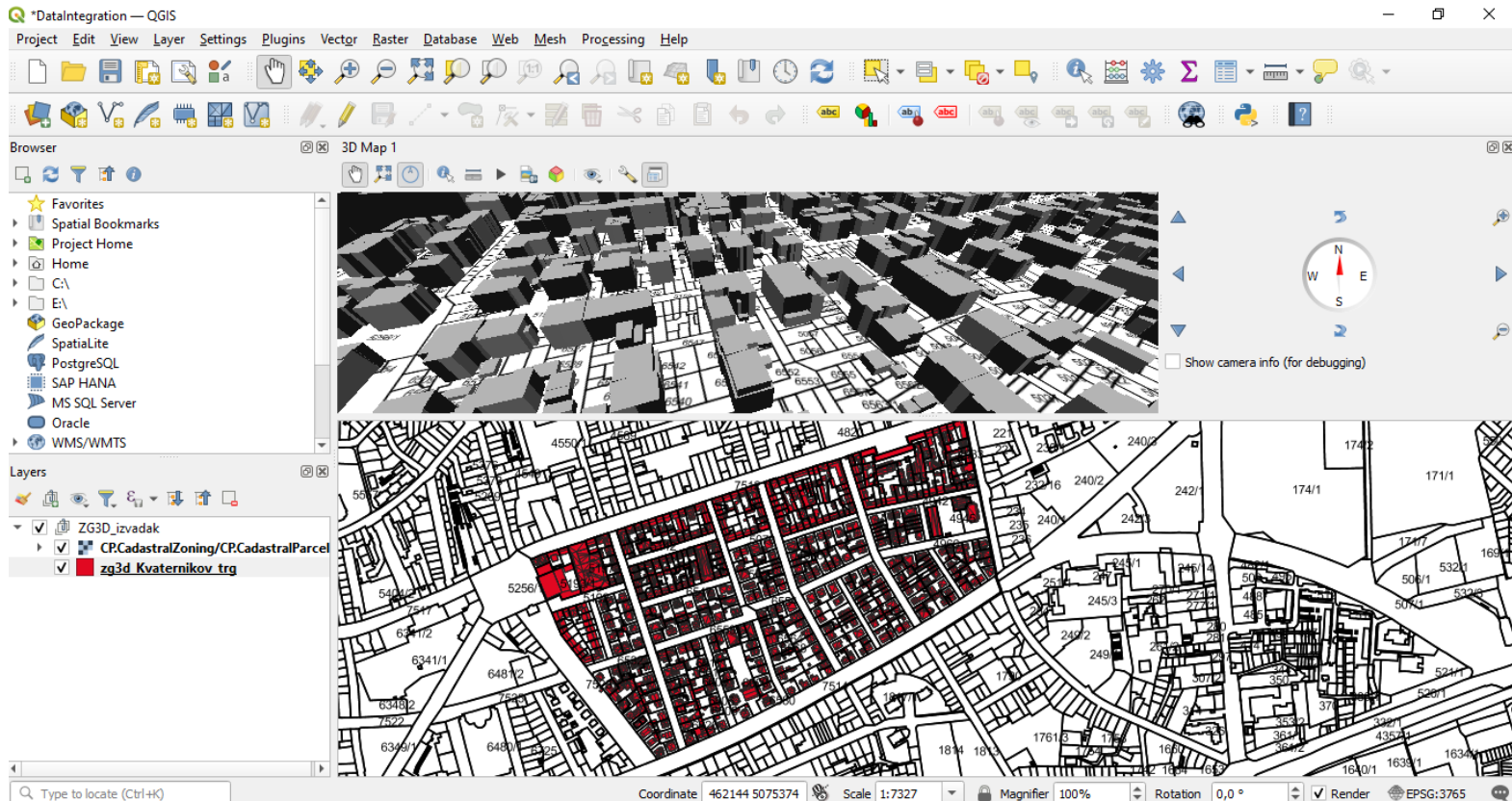
- Integrazione dei dati (QGIS)



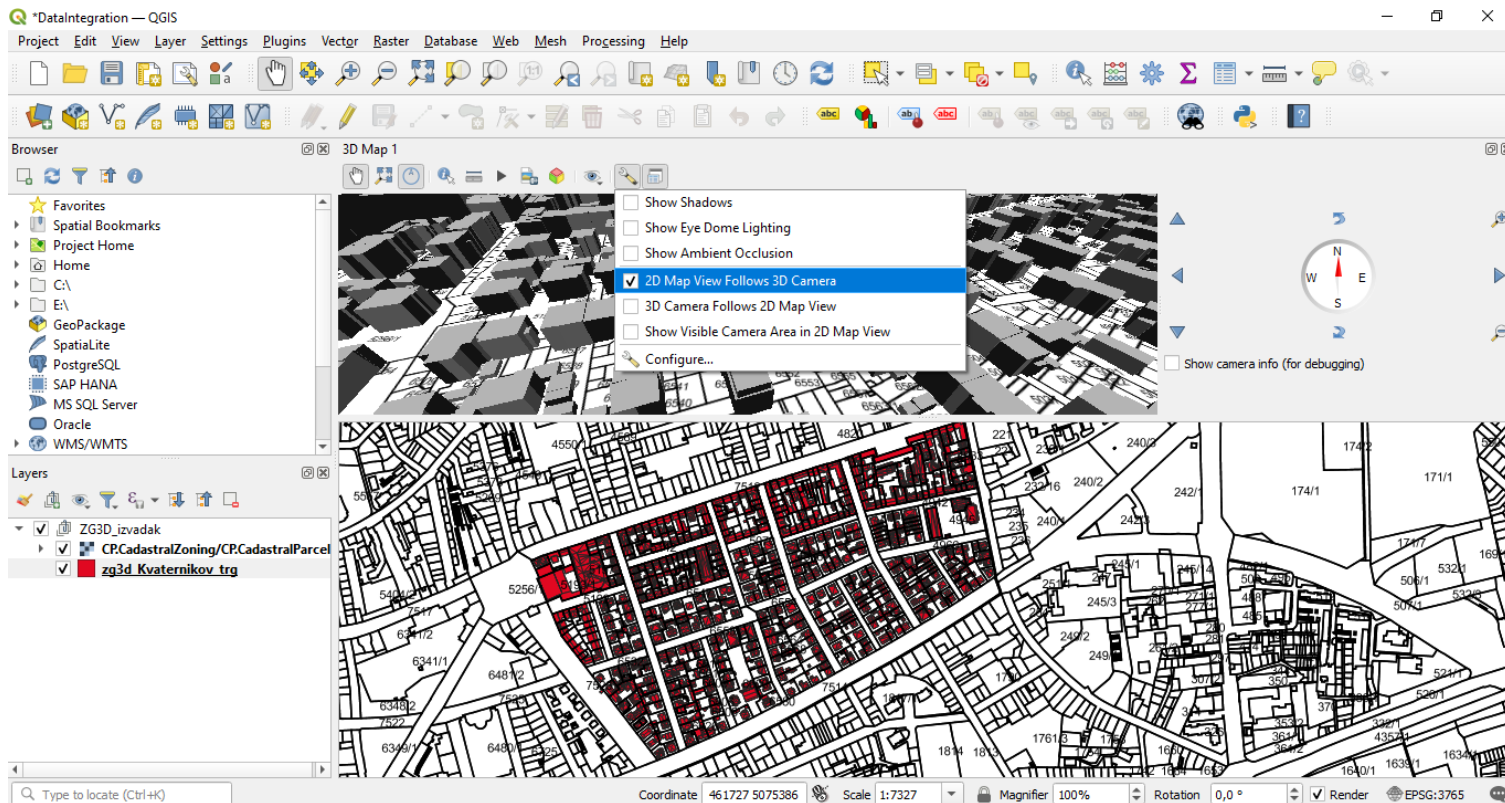
- Integrazione dei dati (QGIS)



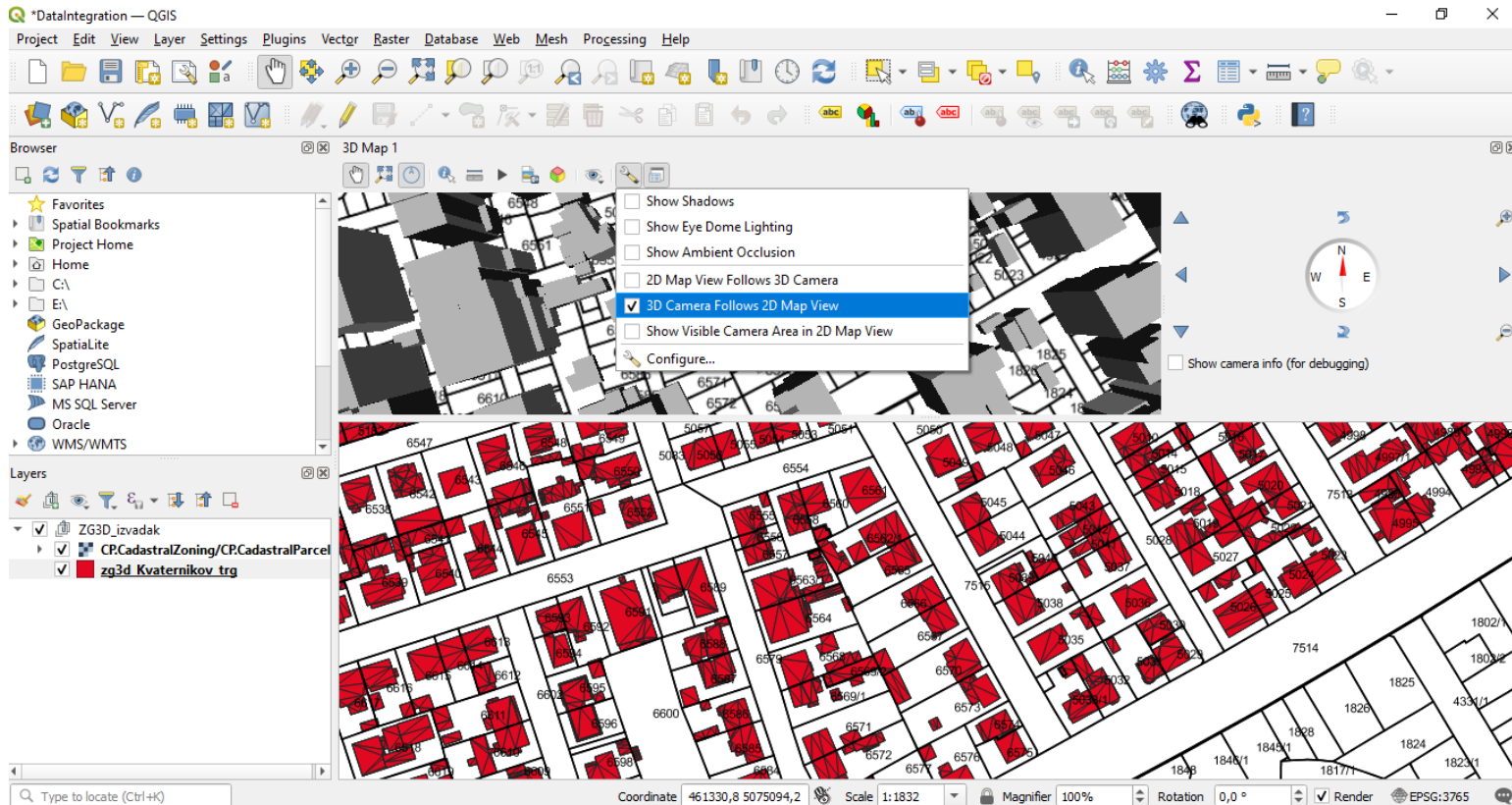
- Integrazione dei dati (QGIS)



- Integrazione dei dati (QGIS)



- Integrazione dei dati (QGIS)



- <https://inspire-geoportal.ec.europa.eu/srv/eng/catalog.search#/home>
- <https://qgis.org/en/site/>
- https://www.mdpi.com/2072-4292/7/6/6710https://arheologijaslovenija.blogspot.com/p/blog-page_81.html

Grazie per la vostra attenzione



<https://birgitproject.eu/>

Finanziato dall'Unione europea. Le opinioni espresse appartengono, tuttavia, al solo o ai soli autori e non riflettono necessariamente le opinioni dell'Unione europea o dell'Agenzia esecutiva europea per l'istruzione e la cultura (EACEA). Né l'Unione europea né l'EACEA possono esserne ritenute responsabili.